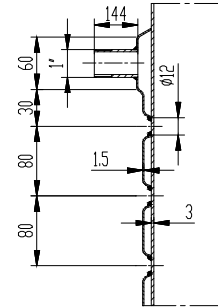


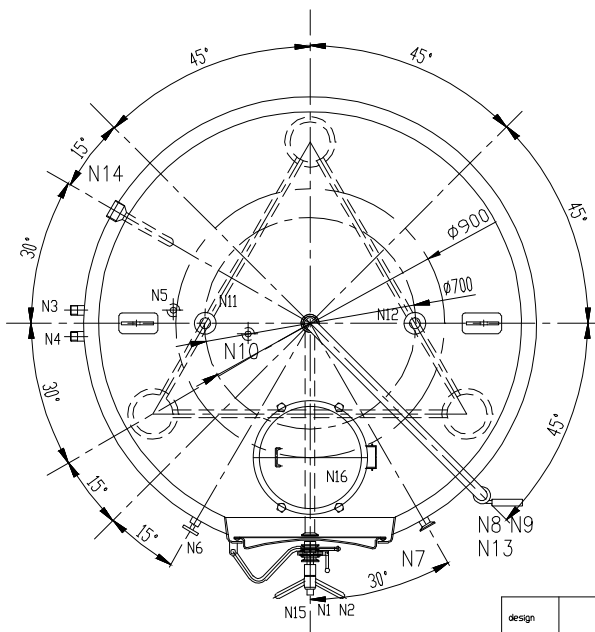
Technique parameter		
	inner tank	Jacket
material	SUS304	SUS304
cooling area m <sup>2</sup>	3.8	
total volume	2200L	



cooling jacket

### Specification

symbol	spec	connecting style	name
N1	1.5"	Tri-clamp	outlet
N2	1.5"	Tri-clamp	outlet
N3	1/2"	BSP female	cooling medium inlet
N4	1/2"	BSP female	cooling medium outlet
N5	1/2"	BSP female	cooling medium inlet
N6	1/2"	BSP female	thermometer hole
N7	1"	Tri-clamp	sample hole
N8	1.5"	Tri-clamp	breath hole
N9	M20X1.5	female screw	pressure hole
N10	1/2"	BSP female	cooling medium outlet
N11	1.5"	Tri-clamp	inlet
N12	2"	Tri-clamp	relief valve
N13	1.5"	Tri-clamp	cleaning hole
N14	1/2"	female screw	thermowell
N15	φ445 X 345	quick-opened	man hole
N16	φ400	quick-opened	man hole



6	heads	1	
5	inner tank	1	
4	cladding	1	
3	insulation	1	
2	jacket	1	
1	legs	3	
	name	quantity	remark

design		drawing name	2200L Fermentation tank	drawing NL		
drawing				weight(kg)	material	
auditing				proportion	quantity	
check						